

A photograph of a forest at night. Several vertical tree trunks are visible, creating a striped pattern. The background is filled with warm, out-of-focus bokeh lights in shades of yellow, orange, and red, suggesting a festive or holiday setting. The foreground shows dark, grassy ground.

Flow Brights and Stripes

Interface®

Flow Brights and Stripes™ Collection

Dynamic linear motion, one flowing movement of travel from start to end point. You see it naturally in the powerful arc path of a gymnast or the play of light created by fireflies on a forest trail. This natural sense of a journey forwards formed the inspiration for Flow™.

Flow™ never remains static. It is moving ahead in exciting, unusual ways. Even the best can become better, forging new paths and directions. Following a natural route, the design patterns of Flow™ Brights and Stripes are the FIRST to easily adapt to BOTH square or plank formats. This mix of ultimate flexibility via subtle tone and linear shape, adds a spark of inspiration to Flow™ which simply lights-up customer creativity.





Product Flow Stripes (Plank) **Colour** Wave **Product** Flow Brights (Plank) **Colour** Midnight **Installed** Ashlar



Product Flow Stripes (Plank) **Colour** Sail **Installed** Ashlar



Product Flow (Plank) **Colour** Ice **Product** Flow Stripes (Plank) **Colour** Ice **Installed** Pattern By Tile

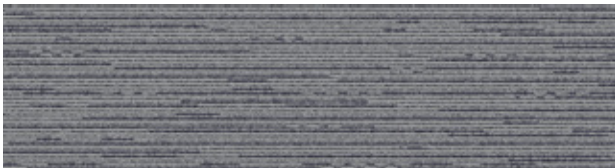


Product Flow (Plank) **Colour** Wave **Installed** Ashlar

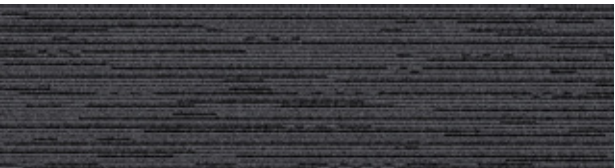
Flow™ Colourline



2052-007-000 Sail



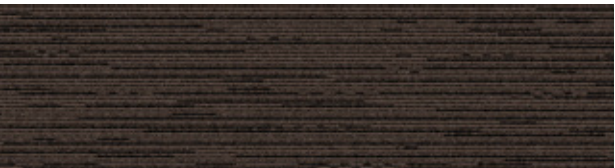
2052-003-000 Ice



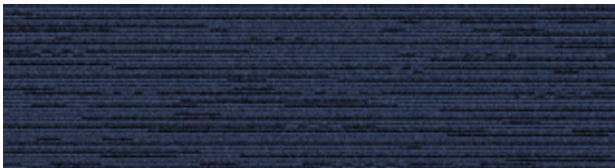
2052-001-000 Flux



2052-002-000 Wave



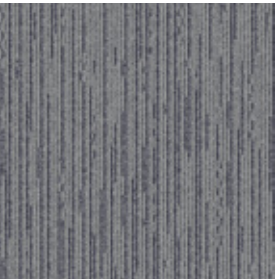
2052-008-000 Landslide



2052-004-000 Surf



2052-007-000 Sail



2052-003-000 Ice



2052-001-000 Flux



2052-002-000 Wave



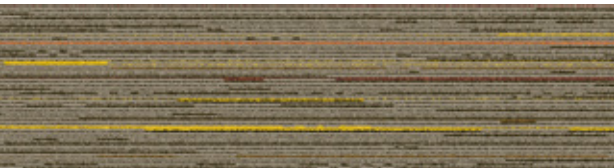
2052-008-000 Landslide



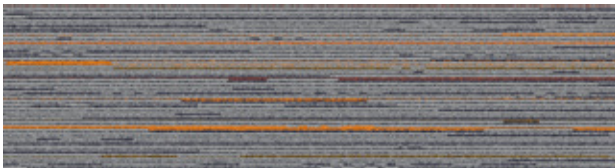
2052-004-000 Surf



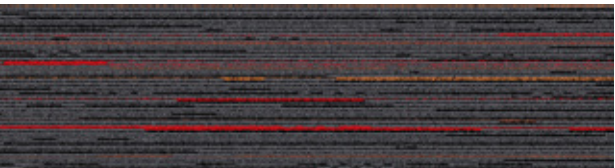
Flow Stripes™ Colourline



2364-007-000 Sail



2364-003-000 Ice



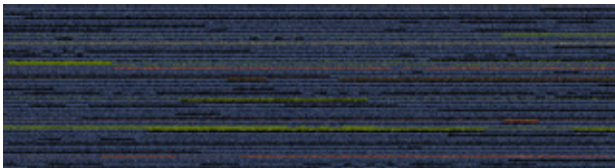
2364-001-000 Flux



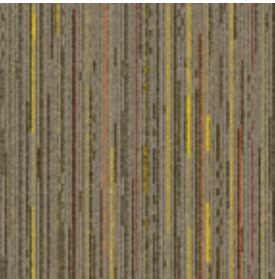
2364-002-000 Wave



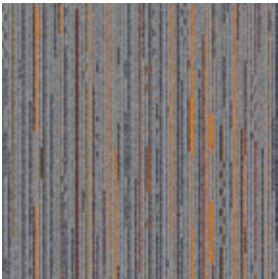
2364-008-000 Landslide



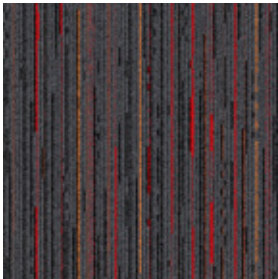
2364-004-000 Surf



2364-007-000 Sail



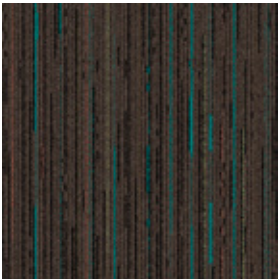
2364-003-000 Ice



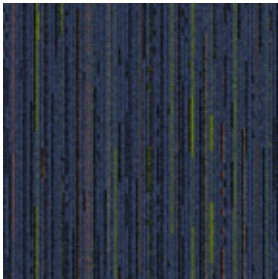
2364-001-000 Flux



2364-002-000 Wave



2364-008-000 Landslide

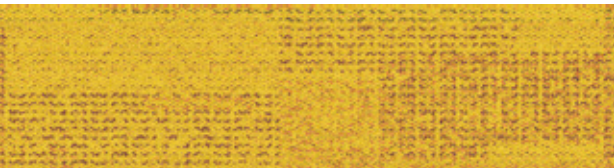


2364-004-000 Surf

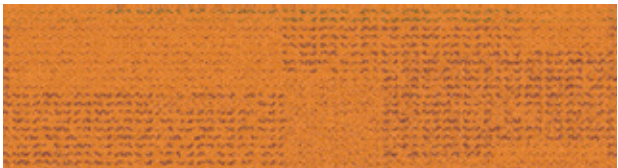


Product Flow Brights (Plank) **Colours** Midnight, Ocean **Installed** Herringbone

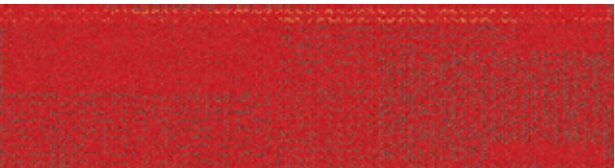
Flow Brights™ Colourline



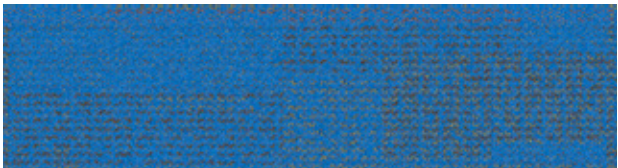
2363-001-000 Sunshine



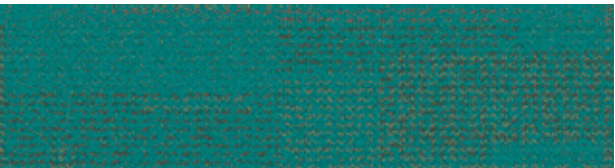
2363-002-000 Sunset



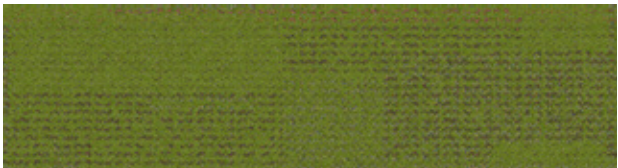
2363-003-000 Flame



2363-004-000 Midnight



2363-005-000 Ocean



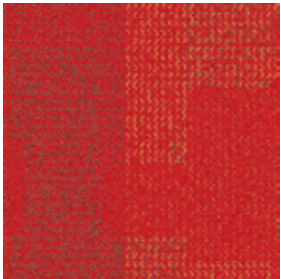
2363-006-000 Seagrass



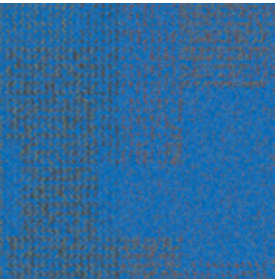
2363-001-000 Sunshine



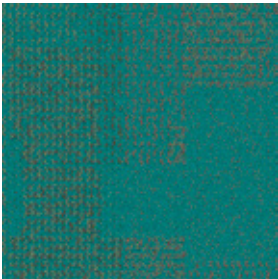
2363-002-000 Sunset



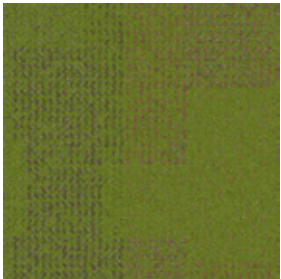
2363-003-000 Flame



2363-004-000 Midnight



2363-005-000 Ocean



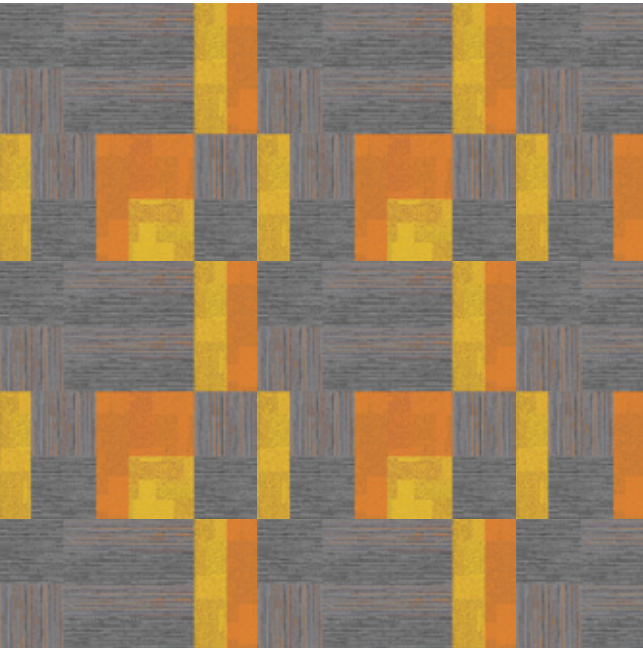
2363-006-000 Seagrass



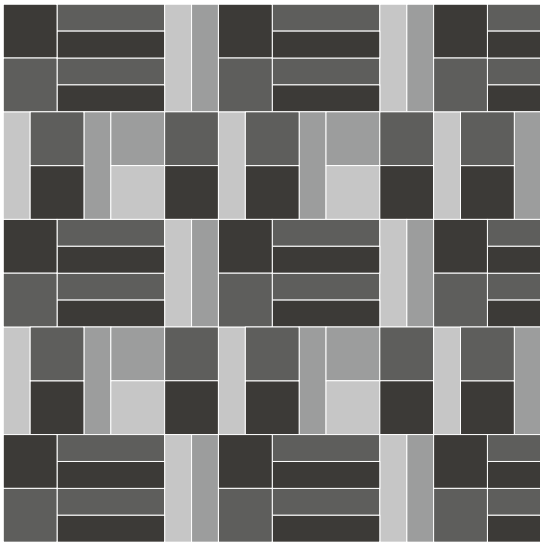
Product Flow (Square) **Colour** Flux **Product** Flow Stripes (Square; Plank) **Colour** Flux
Product Flow Brights (Square) **Colour** Sunset **Installed** Pattern By Tile

Design Ideas

Below are floor layouts showing how to create the design ideas shared in some of the images featured in this brochure.

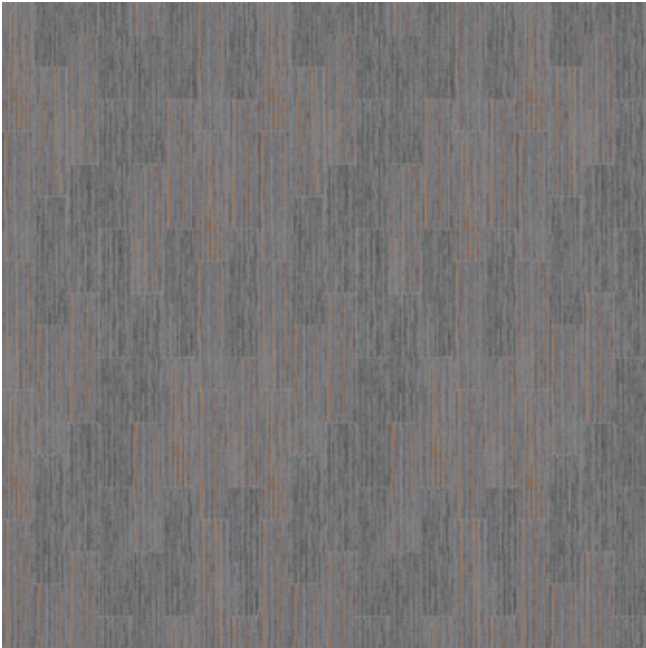


Product Flow (Square; Plank) **Colour** Ice **Product** Flow Stripes (Square; Plank) **Colour** Ice **Product** Flow Brights (Square; Plank) **Colours** Sunset, Sunshine **Installed** Pattern By Tile

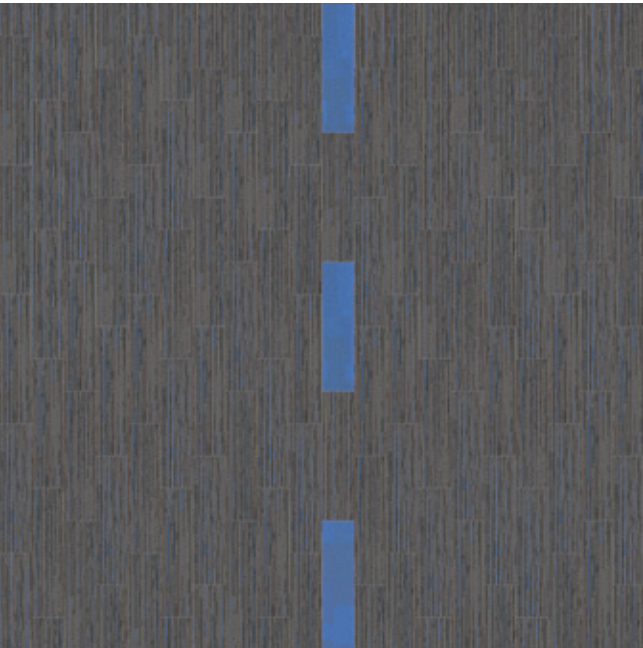
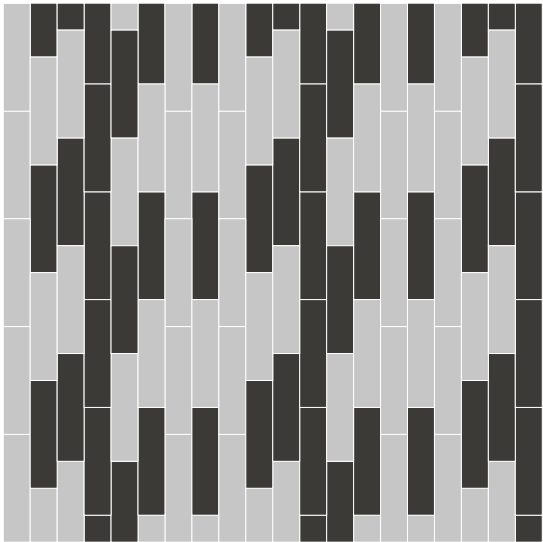


Design Ideas

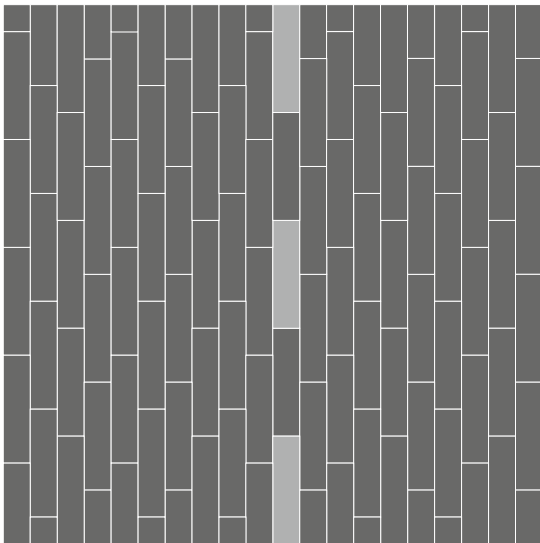
Below are floor layouts showing how to create the design ideas shared in some of the images featured in this brochure.



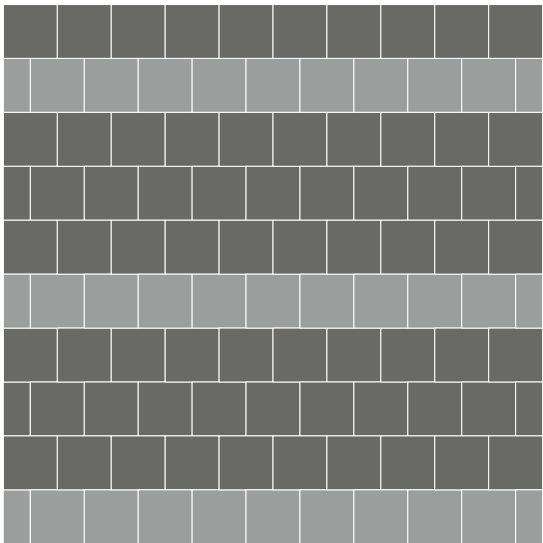
Product Flow (Plank) **Colour** Ice **Product** Flow Stripes (Plank) **Colour** Ice **Installed** Pattern By Tile



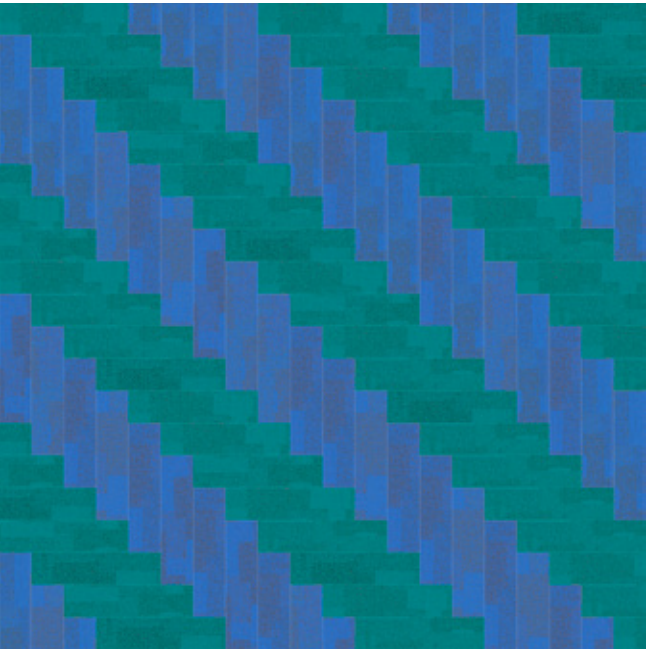
Product Flow Stripes (Plank) **Colour** Wave **Product** Flow Brights (Plank) **Colour** Midnight **Installed** Ashlar



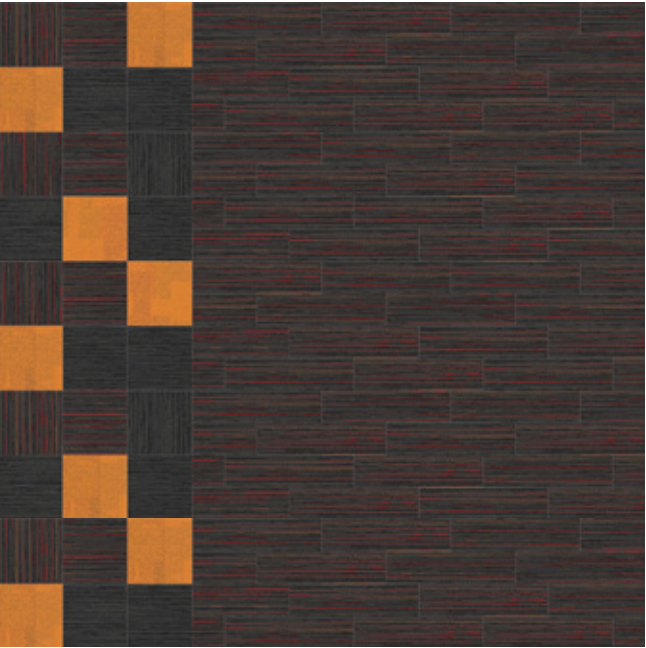
Product Flow Stripes (Square) **Colours** Wave, Surf **Installed** Brick



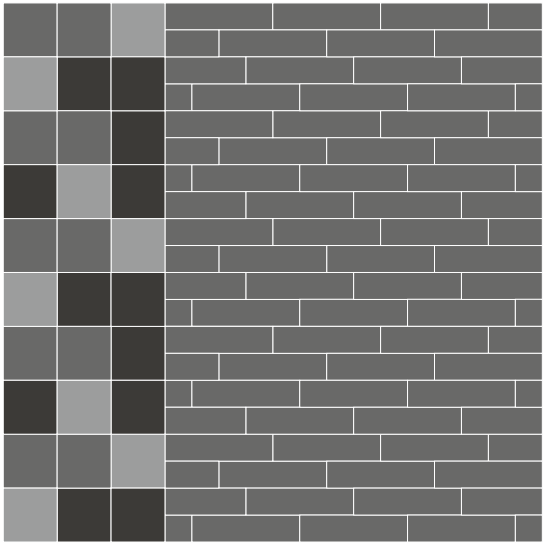
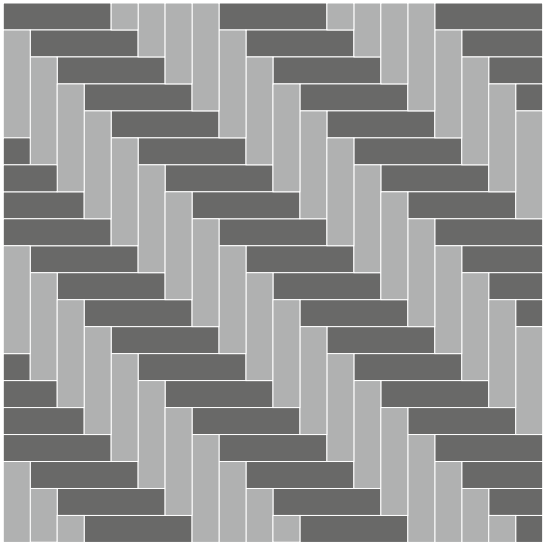
Design Ideas Below are floor layouts showing how to create the design ideas shared in some of the images featured in this brochure.



Product Flow Brights (Plank) **Colours** Midnight, Ocean **Installed** Herringbone



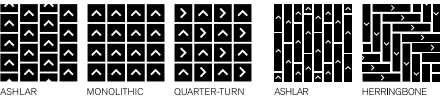
Product Flow (Square) **Colour** Flux **Product** Flow Stripes (Square; Plank) **Colour** Flux **Product** Flow Brights (Square) **Colour** Sunset **Installed** Pattern By Tile



Specifications

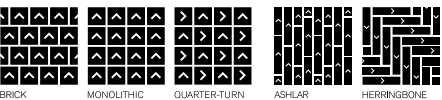
Flow™

Style Code	2052 Pattern 000
Product Construction	Tufted textured Loop
Yarn System	100% Solution Dyed Nylon
Machine Gauge	1/12
Pile Thickness	3.0mm +/- 0.5mm
Total Thickness	6.0mm +/- 0.5mm
Tile Size	50x50cm, 25x100cm
Area of Use	Commercial – General Use
Lifetime Antimicrobial	Intersept®
Soil/Stain Protection	Protekt2®
Installation Methods 50x50cm	Ashlar, Monolithic, Quarter-turn
Installation Methods 25x100cm	Ashlar, Herringbone



Flow Stripes™

Style Code	2364 Pattern 000
Product Construction	Tufted textured Loop
Yarn System	100% Solution Dyed Nylon
Machine Gauge	1/12
Pile Thickness	3.0mm +/- 0.5mm
Total Thickness	6.0mm +/- 0.5mm
Tile Size	50x50cm, 25x100cm
Area of Use	Commercial – General Use
Lifetime Antimicrobial	Intersept®
Soil/Stain Protection	Protekt2®
Installation Methods 50x50cm	Brick, Monolithic, Quarter-turn
Installation Methods 25x100cm	Ashlar, Herringbone



Flow Brights™

Style Code	2363 Pattern 000
Product Construction	Tufted textured Loop
Yarn System	100% Solution Dyed Nylon
Machine Gauge	1/12
Pile Thickness	3.0mm +/- 0.5mm
Total Thickness	6.0mm +/- 0.5mm
Tile Size	50x50cm, 25x100cm
Area of Use	Commercial – General Use
Lifetime Antimicrobial	Intersept®
Soil/Stain Protection	Protekt2®
Installation Methods 50x50cm	Non Directional
Installation Methods 25x100cm	Ashlar, Herringbone, Non Directional



All Interface manufacturing facilities in the Asia Pacific region maintain registration to ISO 9001 Quality Management Systems and ISO 14001 Environmental Management Systems.

Production specifications are subject to normal manufacturing tolerances and may be changed without notice. Slight variation in colour among different production lots are normal and should be considered in the overall installation plan. Products covered by manufacturer's written warranty only. All other warranties, including without limitation any implied warranties of merchantability or fitness for particular purpose, are hereby disclaimed. Contact your representative for written warranty information.



Carbon Neutral Floors™

All of our products are carbon neutral and our programme is verified by an independent third party, Bureau Veritas.



www.interface.com

Australia

Interface Australia
local toll free: 1800 804 361

India

Interface India
tel: +91 80 4613 1313

South East Asia

Interface Asia
tel: +65 6478 1510

South Korea

Interface South Korea
tel: +82 2 555 1734

Japan

Interface Japan
tel: +81 3 5733 5211

Beijing

Interface China
tel: +86 10 6590 7810

Hong Kong

Interface China
tel: +852 2802 0838

Shanghai

Interface China
tel: +86 21 6340 3868

02/2020
SF0104T0



Climate change is undeniable. And reversible. Our mission is to prove it.
Join the #ClimateTakeBack and help create a climate fit for life.